



Presenting >>> ROTO BIOMIX PUMP

Designed for Performance and Reliability

Hopper

Customized hopper available in round, square & with varying lengths.

Flow Rate upto 215 m³/hr
Pressure upto 12 bar

Smarter Shaft Sealing

Cartridge dual mechanical seal with oil lubrication plan for longer life.

Inbuilt Feed Flange

Left handed and right handed port included as standard for feeding of digestate to ensure optimum homogenization.

Large Augur (Feed screw)

Designed for efficient mixing and feeding of substrate.

Digestate Injection Point

The introduction of digestate helps stop the feed stock falling out of suspension whilst retaining heavier solids for easy removal.

Large Stone Catcher

Designed to trap the stones inside the hopper.

Inspection Window

For easy access and cleaning of blockage.

Sealed Cardan Joint with Sleeve Protector

Optimised Rotor Stator Geometry

Improved rotor stator geometry minimizes wear due to lower rubbing velocities particularly used in abrasive applications



ROTO PUMPS LTD.
www.rotopumps.com



DESIGNED FOR PERFORMANCE & RELIABILITY
500+ BIOGAS FEED PUMPS INSTALLED SUCCESSFULLY

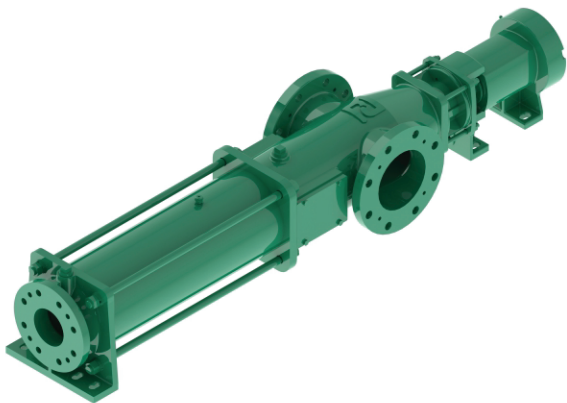
Horizontal RB Series

Flow: Upto 250 m³/hr

Pressure: Upto 12 bar

Application:

Biomix feed • Press separator • Pasteurised biomass • Condensed substrate



Vertical VB Series

Flow : Upto 250 m³/hr

Pressure : Upto 12 bar

Application: Transfer of organic manure from open lagoon



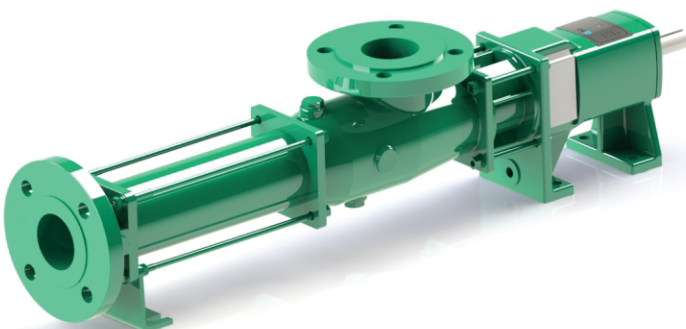
Horizontal RM Series Pump

Flow: Upto 250 m³/hr

Pressure: Upto 12 bar

Application:

Digestate feed • Cow dung slurry transfer
• Liquid Manure • Slaughter waste



ROTO PUMPS LTD.
www.rotopumps.com